

Company Profile



Electro-Mechanical Reliability Company

Notice:

Electro-Mechanical Reliability Company is acquired by Fire Delta Company

This acquisition will enable our company to expand into a market which has proven a track record, it will bring more offer of services to our prospected clients.

Electro-Mechanical Reliability Company



Page

ELECTRO-MECHANICAL RELIABILITY COMPANY

EMRE

About Us

EMRE is an establishment with expertise in electrical services generally industrial and commercial installations, Industrial cabling industrial control panels and maintenance that will maximize the productivity and minimize downtime while providing a level of responsiveness to client needs that is courteous, consistent and safe to achieve quality workmanship through highly trained and certified employees proven project management and the use of premium grade hardware from leading suppliers.

Our staff with several years of experience in electrical cabling, control and automation that work in our various departments that includes installation and commisioning of cabinets.

- ❖ Electrical installations (industrial and commercial)
- ❖ Panel integration (DCS and ESD)
- ❖ Electrical cabling



Message

We are professional electrical Integrator/Assembler and Technical Support Services, located in the Al Khobar Saudi Arabia. We are adopting the inovative approach in manipulating the optimal solution help us tie up the nature of relationship with our clients and enhance the trust in our capabilities and performance. We are mainly mobilized in the Petrochemical & Oil and Gas Industry as we play a potential role in the Integration and Electrical Sector as Certified such as (Modifications, Assembly, Auto CAD, Site installation, Pre FAT & FAT).

Clients

Satisfying a client's need requires a complete understanding of its business and industry market. Therefore, EMRE focuses all customer service efforts in order to ensure:

- a customized offer for every specific industry client.
- an error-free project commissioning
- dedicated assistance all through the selection of produtcs and technical services.



Services

Control Panel

EMRE has qualified Industrial electrical, control engineers and technicians having several years of experience in the development of electrical control panels.

A typical project design would involve the development of:

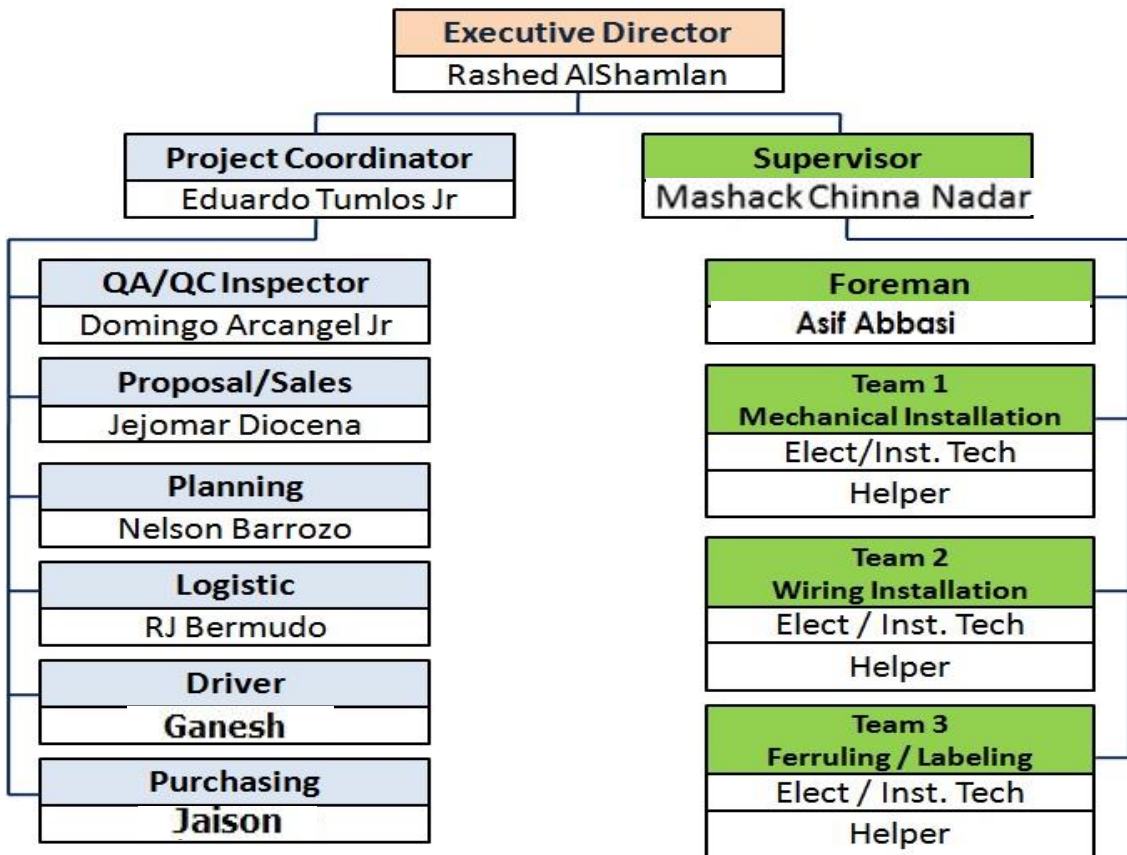
- Fully Detailed Panel Layouts & general assembly
- Wiring Schematics
- Bill of Materials
- Full Safety Schematics
- PLC I/O Schematics
- Marshalling
- Termination & I/O Schedules





ORGANIZATION CHART

Page



Team 1
 Fabricator: Sullivan Hernandez
 Fabricator: Pablo Viazon

Team 2
 Sr. Tech: Ronilo Capangpangan
 Electrician: Jason Idnay
 Electrician: Arnel Infante

Team 3
 Sr. Tech: Larry Aquino
 Helper: Ardy Dayon

Clients

- **Saudi Aramco** - Saudi Arabian national petroleum and natural gas company.
- **Invensys-Schneider Electric** - Industrial Automation, Transportation and Controls.
- **Woojin Inc** – Metering system, Unloading/Loading, Temperature and Field Instrument.
- **Emerson** – Industrial Automation, Transportation and Controls.



WOOJIN INC

Projects

- *Shaybah CPFE project – Integration of 44 cabinets, December 4, 2014*

Page



Other Projects

- ***Shaybah CPFE project – September, 2014.***
Client: Invensys-Schneider
End User: Saudi Aramco
- ***Shaybah CPFE project – May, 2015.***
Client: Invensys-Schneider
End User: Saudi Aramco
- ***Shedgum & Uthmaniyah project – August, 2015.***
Client: Invensys-Schneider
End User: Saudi Aramco
- ***Shaybah CPFE project – August, 2015.***
Client: Invensys-Schnieder
End User: Saudi Aramco
- ***Shedgum & Uthmaniyah project – Factory Acceptance Test Tech. Support, October to December, 2015.***
Client: Invensys-Schneider
End User: Saudi Aramco
- ***King Khalid University – Technical support for Electrical works, November, 2015 up to present.***
Client: Disticnt Architecture Cont Est.
End User: King Khalid University
- ***Saudi Gas project – Technical support for Integration, November, 2015 up to December 2015.***
Client: Saudi Gas Company
End User: Saudi Aramco
- ***SATORP project – Bulk plant ESD & DCS cabinets panel integration and FAT(Factory Acceptance Test) 30 cabinets, February 2016.***
Client: Invensys-Schneirder
End User: Saudi Aramco

Location

Electro-Mechanical Reliability Company
P.O. Box 1849 Alkhobar 31952 Saudi Arabia
Telephone: +966-13-8085284
Fax: +966-13-8085285

Mr. Rashed Alshamlan
Mobile: +966-555 875551
Email: ralshamlan@emregroup.org

Mr. Eduardo Tumlos Jr
Mobile: +966-530 522016
Email: ed@emregroup.org

Email: info@emregroup.org

